


Product Information

FICWKSMIN - Mini Colour Wheel Kaleidoscope Insert

BS EN 1176 - Designed to British & European Standards

MATERIALS


Panel - Two Colour  High Density Polyethylene (HDPE)


Windows - Shatterproof Polycarbonate

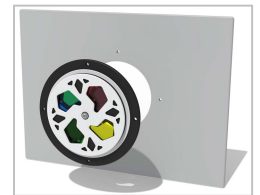
SUPPLY METHOD

Insert - Fully assembled

FEATURES

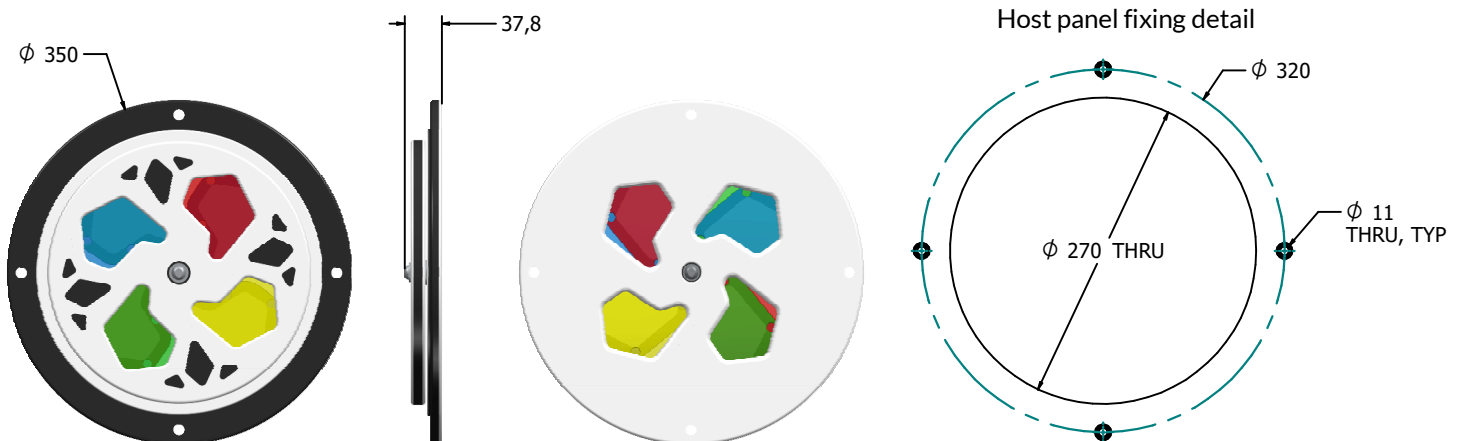
 ROTATE - 360° Rotating colour wheel

 VISUAL - Visually striking colour overlays



Insert can easily attach to your own panel

DIMENSIONS



CAD available on request

TECHNICAL

Age Range: 2+ Years
 Largest Part: FICWKSMIN - $\phi 350 \times 37.8\text{mm}$
 Total Weight: FICWKSMIN - 2kg
 Surfacing: N/A

IMPORTANT: you must specify the colour option you require at the time of order if it is different from the colour listed/shown above, requirements are subject to availability at the time of order