

# Product Information

## FITWISTIN - Twist Bearing Insert

BS EN 1176 - Designed to British & European Standards

### MATERIALS

**Panel** - Two Colour High Density Polyethylene (HDPE)

**Windows** - Clear Polycarbonate


**Balls** - Stainless steel with polish finish

### SUPPLY METHOD

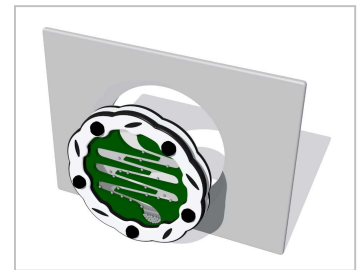
**Insert** - Fully assembled

### FEATURES

 **ROTATE** - 360° turn insert

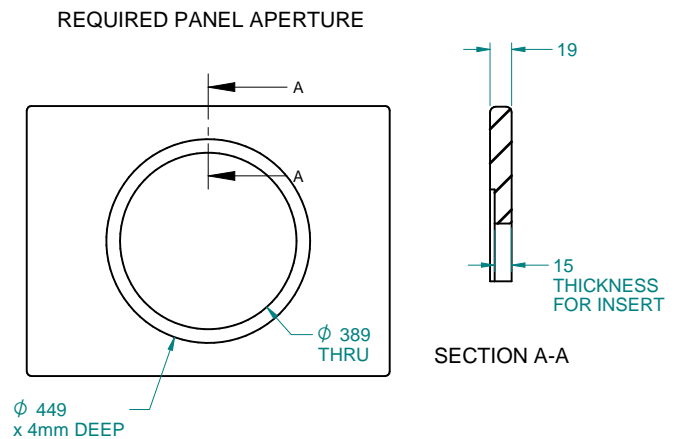
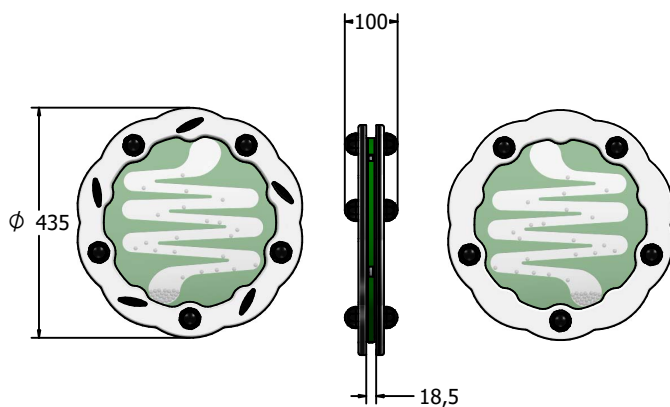
 **SOUND** - Jingling sound from falling balls

 **VISUAL** - Falling metal balls



Insert can easily attach to your own panel

### DIMENSIONS



### TECHNICAL

**Age Range:** 2+ Years  
**Largest Part:** FITWISTIN -  $\phi 435 \times 100$ mm  
**Total Weight:** FITWISTIN - 4.4kg Approx.  
**Surfacing:** N/A

IMPORTANT: you must specify the colour option you require at the time of order if it is different from the colour listed/shown above, requirements are subject to availability at the time of order