

Product Information

FIMPCNB-15 - Multi-Play Cargo Net Bridge

BS EN 1176 - Designed to British & European Standards

MATERIALS

Panel - Two Colour  High Density Polyethylene (HDPE)

Brackets - Stainless Steel

Ropes - Steel core rope sheathed with braided nylon and joined with aluminium connectors

SUPPLY METHOD

Entry Panel & Cargo Net - Supplied separately with the fixings needed to attach to platforms and each other
(Fixings to attach to posts not included.)

FEATURES



CLIMB - Cargo Net Bridge



Steel Core Rope



FIMPCNB900-15
(For 0.9m Platform)

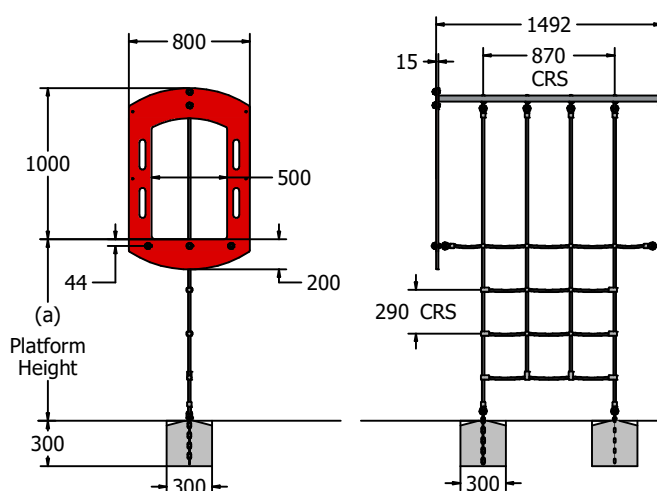


FIMPCNB1500-15
(For 1.5m Platform)



FIMPCNB1200-15
(For 1.2m Platform)

DIMENSIONS



(a)	(b)
600mm	2050 (+/- 15mm)
900mm	2480 (+/- 15mm)
1200mm	2920 (+/- 15mm)
1500mm	3370 (+/- 15mm)

(a)
900mm
1200mm
1500mm

TECHNICAL

Age Range: 4+ Years
Largest Part: Net (a)+280mm x 1462mm
Heaviest Part: 1.5m Net Approx. 7.5kg
Total Weight: Approx. (0.9m = 25kg), (1.2m = 26kg), (1.5m = 27kg)
Surfacing: 1.5m from the extents of the equipment with a critical fall height in excess of (a)

IMPORTANT: you must specify the colour option you require at the time of order if it is different from the colour listed/shown above, requirements are subject to availability at the time of order