

Product Information

FIFTARCBEAM - Arched Balance Beam

BS EN 1176 - Designed to British & European Standards

MATERIALS

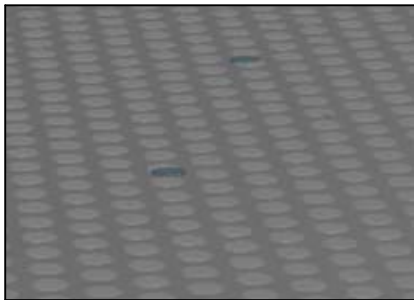
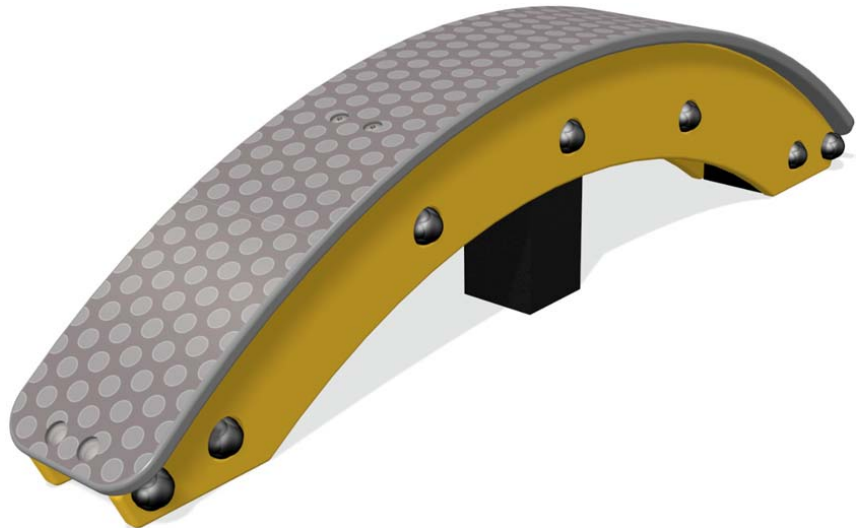
Panel - Single Colour High Density Polyethylene (HDPE)

Polydek - HDPE with a rubber button grip top surface

Recycled Posts - Recycled plastic with a texture finish

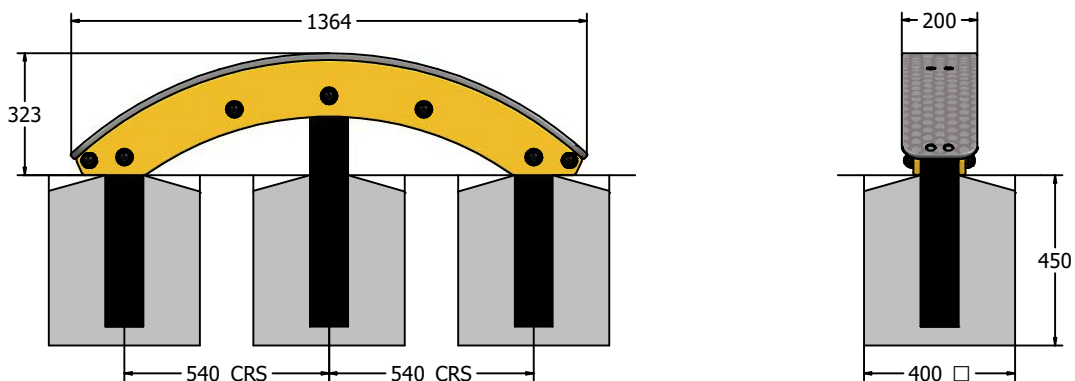
SUPPLY METHOD

Balance Beam - Pre-assembled for easy installation



Anti-Slip Polydek Tread

DIMENSIONS



TECHNICAL

Age Range: 3+ Years
Largest Part: Beam Assembly - 1364 x 323 x 200mm
Total Weight: 30kg Approx.
Surfacing: N/A

IMPORTANT: you must specify the colour option you require at the time of order if it is different from the colour listed/shown above, requirements are subject to availability at the time of order