

## Product Information

### FIFBOAT - Fishing Boat

BS EN 1176 - Designed to British & European Standards

#### MATERIALS

**Panels** - Two Colour High Density Polyethylene (HDPE)

**PolyDek** - HDPE with a rubber button grip top surface

**Recycled Posts** - Recycled plastic with textured finish

**LumbeRock Benches** - Recycled HDPE milk bottles with a wood grain finish

#### SUPPLY METHOD

**Fishing Boat** - 3 Sections with joining plates and fixings

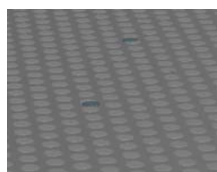
#### FEATURES



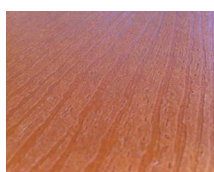
**SOCIAL** - Fishing Boat Role - Play and Seating



**ROTATE** - Rotating Boat Wheel

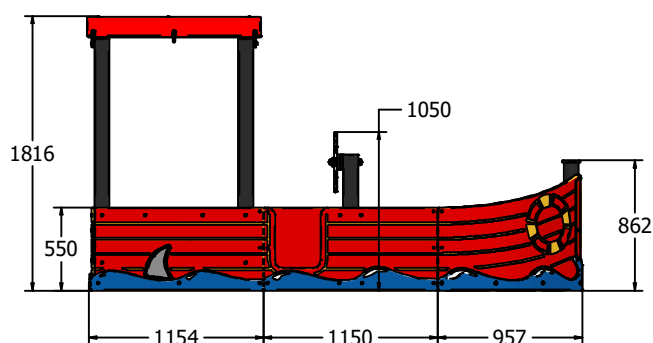
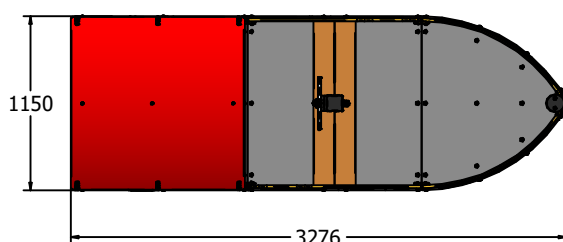


Slip Resistant Polydek



LumbeRock Benches

#### DIMENSIONS



#### TECHNICAL

**Age Range:** 2+ Years  
**Largest Part:** Stern Section Assembly - 1816 x 1150 x 1154mm  
**Heaviest Part:** Stern Section Assembly - 178kg Approx.  
**Total Weight:** 303kg Approx.  
**Surfacing:** N/A

IMPORTANT: you must specify the colour option you require at the time of order if it is different from the colour listed/shown above, requirements are subject to availability at the time of order

**Fahr Industries Ltd**  
 Spitfire Road, Old Sarum,  
 Salisbury, Wiltshire, SP4 6GB, UK

© 2023 Fahr Industries Ltd

These designs and content belong to Fahr Industries Ltd and are not to be reproduced in any way or by any means without written permission

**Tel:** +44 (0)1722 349793  
**Fax:** +44 (0)1722 349792  
**Web:** [www.fahr-industries.com](http://www.fahr-industries.com)