

# Product Information

## FIBDTS - Underground Tunnel with 1200 x 800mm Curved Entry Panels

BS EN 1176 - Designed to British & European Standards

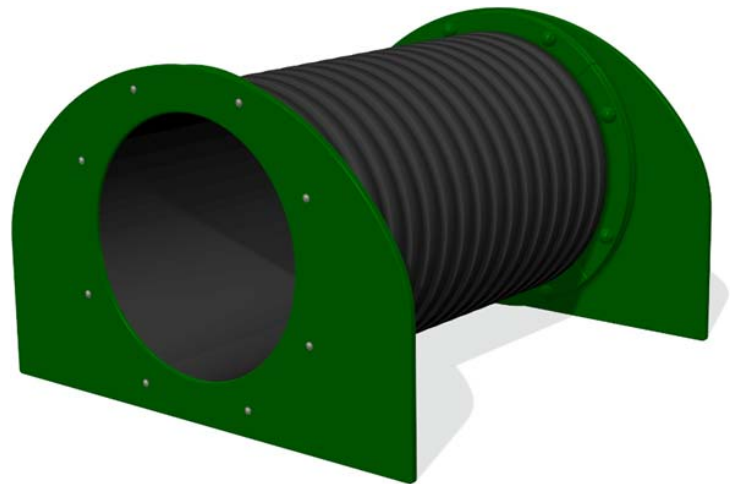
### MATERIALS

**Panels** - High Density Polyethylene (HDPE)

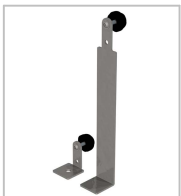
**Ribbed Tunnel** - HDPE Heavy duty ribbed tunnel with a smooth inner

### SUPPLY METHOD

**Tunnel** - Fully assembled



FIBDTS12 - 1.2m

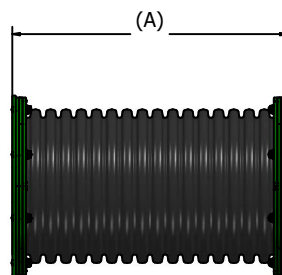
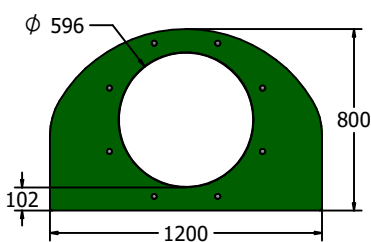


Surface or below ground fixing brackets available as an additional extra.



TUV certified as freestanding only. Underground use un-certified due to varying installation methods.

### DIMENSIONS



Tunnell Overall Length (all lengths +/- 20mm)	
Product Code	Length (A)
FIBDTS12	1213mm +/- 20mm
FIBDTS15	1482mm +/- 20mm
FIBDTS18	1818mm +/- 20mm
FIBDTS20	2020mm +/- 20mm

### TECHNICAL

**Age Range:** 2+ Years  
**Largest Part:** FIBDTS12 - 1200 x 800 x 1213mm +/- 20mm  
**Heaviest Part:** FIBDTS12 - 45 kg Approx.  
**Total Weight:** 45 kg Approx.  
**FFH (Free Fall Height):** 800mm  
**Surfacing :** 1.5m from extremes of equipment.

**Age Range:** 2+ Years  
**Largest Part:** FIBDTS15 - 1200 x 800 x 1482mm +/- 20mm  
**Heaviest Part:** FIBDTS15 - 50 kg Approx.  
**Total Weight:** 50 kg Approx.  
**FFH (Free Fall Height):** 800mm  
**Surfacing :** 1.5m from extremes of equipment.

**Age Range:** 2+ Years  
**Largest Part:** FIBDTS18 - 1200 x 800 x 1818mm +/- 20mm  
**Heaviest Part:** FIBDTS18 - 54 kg Approx.  
**Total Weight:** 54 kg Approx.  
**FFH (Free Fall Height):** 800mm  
**Surfacing :** 1.5m from extremes of equipment.

**Age Range:** 2+ Years  
**Largest Part:** FIBDTS20 - 1200 x 800 x 2020mm +/- 20mm  
**Heaviest Part:** FIBDTS20 - 57 kg Approx.  
**Total Weight:** 57 kg Approx.  
**FFH (Free Fall Height):** 800mm  
**Surfacing :** 1.5m from extremes of equipment.

IMPORTANT: you must specify the colour option you require at the time of order if it is different from the colour listed/shown above, requirements are subject to availability at the time of order